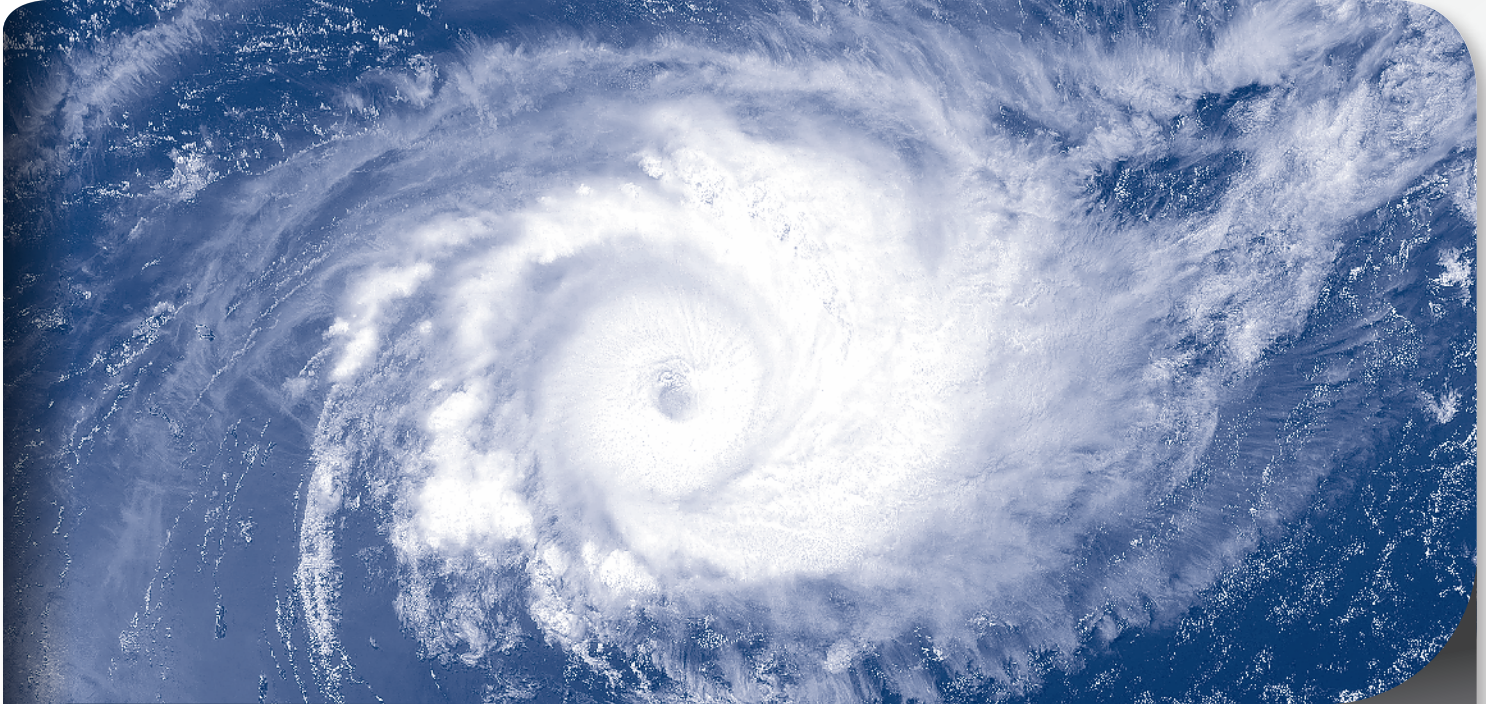




Preparing for the Storm

Develop a complete action plan with the entire family. This plan should include evacuation procedures and preparation tips for both inside and outside the house.



HURRICANE CHECK-LIST

COVERING POSSIBILITIES

PREPARATION

- Stock up on emergency supplies including a first aid kit, batteries, flashlights, matches, candles, fire extinguisher, sterno, fuel, sand, and a bucket and rope (for gathering fresh water from your tank).
- Stock up on canned/dry foods that require little preparation and cooking (make sure that you have a mechanical can opener).
- Sterilize and fill jugs, bottles, etc. with drinking water; fill the bathtub to enable flushing of the toilets.
- Pet owners should stock up on pet food also.
- Check on supply of necessary medications.
- Put important documents in waterproof container.
- If necessary, withdraw some cash from the bank.
- Unplug any appliances, computers, televisions and equipment that may be susceptible to power spikes or surges.
- Make sure that animals are kept indoors where possible.
- Charge your mobile phone(s).
- Keep your (battery powered) radio tuned to local stations or the Government Emergency Broadcast Facility (FM 100.1 MHz) for continuous weather updates.



BUILDINGS

- Secure storm shutters or board up windows.
- Remove or secure awnings.
- Plug water tank roof drains with rags or other suitable items to prevent ingress of leaves and other debris into the tank during the storm. BE AWARE OF THE POTENTIAL FOR WATER TO OVERFLOW FROM ROOF AREAS AND CAUSE FLOOD DAMAGE TO THE HOUSE. DO NOT BLOCK DRAINS WHICH COULD GIVE RISE TO THIS SITUATION.
- Make sure roof down pipes are fitted with securely installed strainers.
- If you have a garage, brace garage doors from the inside.
- Turn off main gas valve to cylinders and tanks (do not disconnect gas lines).

OUTSIDE PROPERTY

- Secure all moveable objects from your garden/yard (i.e. garbage cans, garden furniture) and remove and secure outside awnings.
- Anchor small sheds and punts.
- Take down and/or secure TV antennas, satellite dishes and other aerial masts.
- Trim back any tree branches that could cause damage or a power outage.
- Secure and tie down anything that can't be taken inside.

POOLS

- Turn off all electrical power to the pool, but do not drain it (Moveable items can be submerged in the pool).
- Add chlorine to purify water and protect the pool motor.

MARINE

- If you own a boat, ensure that the boat (and its accessories) and the mooring is secure and where necessary pull the boat out of the water and move to a secure location.
- If at all possible secure your boat with an extra bridle.
- Anchor and/or secure your punt and any large accessories.
- DO NOT attempt to secure your boat after waters become dangerously rough.

MOTOR

- Make sure your vehicles (cars, commercial vehicles and bikes) have a full tank of fuel.
- Check fluids (water, oil) and battery.
- Check spare tires.
- Park your vehicle in a safe and secure area. If possible, inside a garage or away from trees would be best.